

Архангельск (8182)63-90-72
Астана (7172)727-132
Астрахань (8512)99-46-04
Барнаул (3852)73-04-60
Белгород (4722)40-23-64
Брянск (4832)59-03-52
Владивосток (423)249-28-31
Волгоград (844)278-03-48
Вологда (8172)26-41-59
Воронеж (473)204-51-73
Екатеринбург (343)384-55-89
Иваново (4932)77-34-06

Ижевск (3412)26-03-58
Иркутск (395)279-98-46
Казань (843)206-01-48
Калининград (4012)72-03-81
Калуга (4842)92-23-67
Кемерово (3842)65-04-62
Киров (8332)68-02-04
Краснодар (861)203-40-90
Красноярск (391)204-63-61
Курск (4712)77-13-04
Липецк (4742)52-20-81
Киргизия (996)312-96-26-47

Магнитогорск (3519)55-03-13
Москва (495)268-04-70
Мурманск (8152)59-64-93
Набережные Челны (8552)20-53-41
Нижний Новгород (831)429-08-12
Новокузнецк (3843)20-46-81
Новосибирск (383)227-86-73
Омск (3812)21-46-40
Орел (4862)44-53-42
Оренбург (3532)37-68-04
Пенза (8412)22-31-16
Россия (495)268-04-70

Пермь (342)205-81-47
Ростов-на-Дону (863)308-18-15
Рязань (4912)46-61-64
Самара (846)206-03-16
Санкт-Петербург (812)309-46-40
Саратов (845)249-38-78
Севастополь (8692)22-31-93
Симферополь (3652)67-13-56
Смоленск (4812)29-41-54
Сочи (862)225-72-31
Ставрополь (8652)20-65-13
Казахстан (772)734-952-31

Сургут (3462)77-98-35
Тверь (4822)63-31-35
Томск (3822)98-41-53
Тула (4872)74-02-29
Тюмень (3452)66-21-18
Ульяновск (8422)24-23-59
Уфа (347)229-48-12
Хабаровск (4212)92-98-04
Челябинск (351)202-03-61
Череповец (8202)49-02-64
Ярославль (4852)69-52-93

<https://guide.nt-rt.ru> || ged@nt-rt.ru

PC210

Tool-Like Thermal Camera

Clearer And Longer Operating, Making Your Work Easier



Introduce

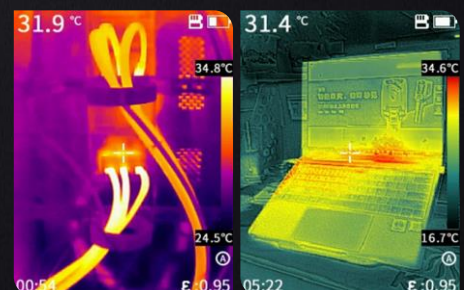
PC210, Tool-like Handheld Thermal Camera, With excellent performance in image quality and charging battery life, This Thermal Camera adopts 256x192 IR Detector and 200W pixel visible light. Adopts the New SharpIR composite image enhancement technology, it can provide you with detailed infrared thermal imaging and dual-light fusion images to help you find potential faults more quickly.

Features and Benefits

- Adopts 256x192 infrared module with Excellent imaging quality
- 16H Operating time, 2.5H fast charge, easy to cope with two days of work
- Turn on in 1 second And Use, full-frame temperature measurement
- Rugged and Durable, Resistant to 2 meters drop, IP54 Protection Rating
- 4 Color Palettes, And all palettes can display the temperature
- Wide temperature measurement range, -20°C~550°C, Automatic Switch
- Type C interface, Easy to transfer data And support PC screen projection

Application

- Building Diagnostics
- HVAC Inspection
- Facilities maintenance
- Electrical Application



Specifications

| Model | PC210 |
|---|---|
| IR image & Optical | |
| Detector type | 256×192@12μm, VOx |
| Spectral | 7.5~14μm |
| Frame Rate | 25Hz/9Hz |
| Thermal Sensitivity / NETD | 45mK |
| Focal Length | 3.2mm |
| Field of view(FOV) | 56°×48° |
| Spatial Resolution(IFOV) | 3.75mrad |
| Min focus distance | 0.3m |
| D:S | 130:1 |
| Focus | Focus-free |
| Visible Camera | |
| Visible Camera Resolution | 200W pixel, Resolution optional (240×320/1600×1200) |
| Flashlight | Yes |
| Image Display | |
| Display | 2.4" LCD screen |
| Display Resolution | 240×320 |
| Image Model | IR, Visible, Picture-in-Picture, MIF |
| Color Palettes | 6:White Hot, Iron Red, Hot Iron, Arctic, Rainbow 1, Rainbow 2 |
| Temperature Measurement | |
| Temperature Range | -20°C-150°C, 100°C-550°C (Auto switching) |
| Accuracy | ±2°C or ±2%, whichever is greater (target temp ≥0°C, ambient temp is 5°C ~ 30°C) |
| Measurement Spot | Center spot |
| Measurement Area | 3(incl. max & min temp) |
| Auto Hot & Cold Spot Tracking | Yes |
| Alarm | Full Screen Max & Min Spot Alarm,Support Image and flash light Alarm |
| Image Storage | |
| Storage Media | TF card (Standard 16G, up to 32G) |
| Image Format | IR/MIF/PIP Image Format:Jpg format with temperature data (256*192) ;Visible light image format: jpg format without temperature data (240*320) |
| Connections & Communications | |
| USB | TYPE-C, TF Card slot |
| Laser | Yes |
| Tripod interface | Yes |
| PC IR Analysis Software | Yes |
| Power System | |
| Battery Type | Rechargeable Li ion battery |
| Battery Operating Time | 16 hours |
| Charging Time | Internal charge, ≤2.5 hours |
| Environmental Parameters | |
| Operating Temperature | -15°C~50°C |
| Storage Temperature | -40°C~70°C |
| Encapsulation | IP54, 2-meter drop test |
| Certification | CE/ROHS/FCC/PSC/KC/UN38.3/IP54 |
| Weight | about 375g |
| Size | 194mm×61.5mm×76mm |
| Standard Accessories | Charger + Adapter, TYPE-C USB cable, Wrist Strap, Quick start Guide, Data Download Card, 16G TF Card |

Архангельск (8182)63-90-72
 Астана (7172)727-132
 Астрахань (8512)99-46-04
 Барнаул (3852)73-04-60
 Белгород (4722)40-23-64
 Брянск (4832)59-03-52
 Владивосток (423)249-28-31
 Волгоград (844)278-03-48
 Вологда (8172)26-41-59
 Воронеж (473)204-51-73
 Екатеринбург (343)384-55-89
 Иваново (4932)77-34-06

Ижевск (3412)26-03-58
 Иркутск (395)279-98-46
 Казань (843)206-01-48
 Калининград (4012)72-03-81
 Калуга (4842)92-23-67
 Кемерово (3842)65-04-62
 Киров (8332)68-02-04
 Краснодар (861)203-40-90
 Красноярск (391)204-63-61
 Курск (4712)77-13-04
 Липецк (4742)52-20-81
 Киргизия (996)312-96-26-47

Магнитогорск (3519)55-03-13
 Москва (495)268-04-70
 Мурманск (8152)59-64-93
 Набережные Челны (8552)20-53-41
 Нижний Новгород (831)429-08-12
 Новокузнецк (3843)20-46-81
 Новосибирск (383)227-86-73
 Омск (3812)21-46-40
 Орел (4862)44-53-42
 Оренбург (3532)37-68-04
 Пенза (8412)22-31-16
 Россия (495)268-04-70

Пермь (342)205-81-47
 Ростов-на-Дону (863)308-18-15
 Рязань (4912)46-61-64
 Самара (846)206-03-16
 Санкт-Петербург (812)309-46-40
 Саратов (845)249-38-78
 Севастополь (8692)22-31-93
 Симферополь (3652)67-13-56
 Смоленск (4812)29-41-54
 Сочи (862)225-72-31
 Ставрополь (8652)20-65-13
 Казахстан (772)734-952-31

Сургут (3462)77-98-35
 Тверь (4822)63-31-35
 Томск (3822)98-41-53
 Тула (4872)74-02-29
 Тюмень (3452)66-21-18
 Ульяновск (8422)24-23-59
 Уфа (347)229-48-12
 Хабаровск (4212)92-98-04
 Челябинск (351)202-03-61
 Череповец (8202)49-02-64
 Ярославль (4852)69-52-93