

Архангельск (8182)63-90-72
Астана (7172)727-132
Астрахань (8512)99-46-04
Барнаул (3852)73-04-60
Белгород (4722)40-23-64
Брянск (4832)59-03-52
Владивосток (423)249-28-31
Волгоград (844)278-03-48
Вологда (8172)26-41-59
Воронеж (473)204-51-73
Екатеринбург (343)384-55-89
Иваново (4932)77-34-06

Ижевск (3412)26-03-58
Иркутск (395)279-98-46
Казань (843)206-01-48
Калининград (4012)72-03-81
Калуга (4842)92-23-67
Кемерово (3842)65-04-62
Киров (8332)68-02-04
Краснодар (861)203-40-90
Красноярск (391)204-63-61
Курск (4712)77-13-04
Липецк (4742)52-20-81

Киргизия (996)312-96-26-47

Магнитогорск (3519)55-03-13
Москва (495)268-04-70
Мурманск (8152)59-64-93
Набережные Челны (8552)20-53-41
Нижний Новгород (831)429-08-12
Новокузнецк (3843)20-46-81
Новосибирск (383)227-86-73
Омск (3812)21-46-40
Орел (4862)44-53-42
Оренбург (3532)37-68-04
Пенза (8412)22-31-16

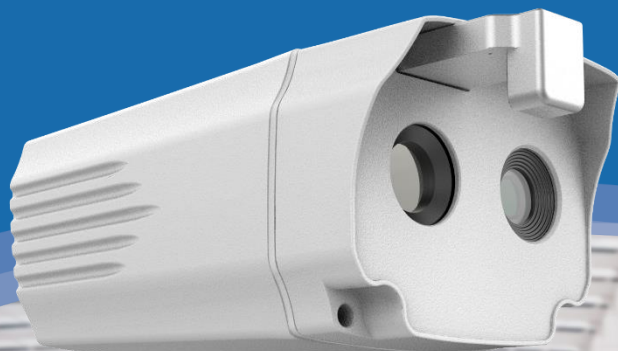
Россия (495)268-04-70

Пермь (342)205-81-47
Ростов-на-Дону (863)308-18-15
Рязань (4912)46-61-64
Самара (846)206-03-16
Санкт-Петербург (812)309-46-40
Саратов (845)249-38-78
Севастополь (8692)22-31-93
Симферополь (3652)67-13-56
Смоленск (4812)29-41-54
Сочи (862)225-72-31
Ставрополь (8652)20-65-13

Казахстан (772)734-952-31

Сургут (3462)77-98-35
Тверь (4822)63-31-35
Томск (3822)98-41-53
Тула (4872)74-02-29
Тюмень (3452)66-21-18
Ульяновск (8422)24-23-59
Уфа (347)229-48-12
Хабаровск (4212)92-98-04
Челябинск (351)202-03-61
Череповец (8202)49-02-64
Ярославль (4852)69-52-93

<https://guide.nt-rt.ru> || ged@nt-rt.ru



Preferred Solution for Daily Screening

Preferred Solution for Daily Screening

Accurate

AI & integrated black body
High accuracy $\leq 0.3^{\circ}\text{C}$

Fast

Fast installation, easy deployment in 5 minutes
fast screening for multi-person, no need to stop

Flexible

Flexible deployment
Support multiple installation methods

QT Series

IR Fever Warning System

QT Series IR Fever Warning System

Budget-friendly thermal solution for daily temperature screening

User needs		QT Series
Economical	Affordable, Cost-effective	<p>Different resolutions and configuration options are available</p> <ul style="list-style-type: none"> ✓ Built-in AI algorithm in camera head, no need for high-end computers ✓ Integrated blackbody design, more streamlined product configuration, quick deployment in 5 minutes
Effectiveness	Accurate, Fast	<p>Deliver quickly and accurately temperature check for multi-person</p> <ul style="list-style-type: none"> ✓ AI super computing power, support custom temperature measurement area, effectively avoid interference from other high temperature objects ✓ 7x24h all-day detection in real-time, stable and reliable
Identification	Automatically alarm while detecting the elevated temperature and can identify and record the identity of the person	<p>AI face recognition, quickly locate the people with elevated temperature</p> <ul style="list-style-type: none"> ✓ A face comparison library of 50,000 people can compare and count over-temperature personnel in places with a fixed population ✓ Supports smart face recognition by wearing a mask, no need to take off the mask to confirm its identity, more secure
Diversified application scenarios	Universally applicable in industrial plants, office buildings, schools and general business facilities	<p>Multiply installation method, for more application scenarios</p> <ul style="list-style-type: none"> ✓ Hoisting base, wall mounted base (attached to the wall) ✓ Vertical mount base, tripod (mobile layout) ✓ TV bracket (integrated layout)
Network requirement	Easy networking, support data transmission to platform	<p>Dual channel, single IP design, support ONVIF protocol, camera WEB page can easily modify IP</p> <ul style="list-style-type: none"> ✓ Easy access to customers' existing monitoring network/security network ✓ Real-time transmission of personnel data and alarm data to the platform



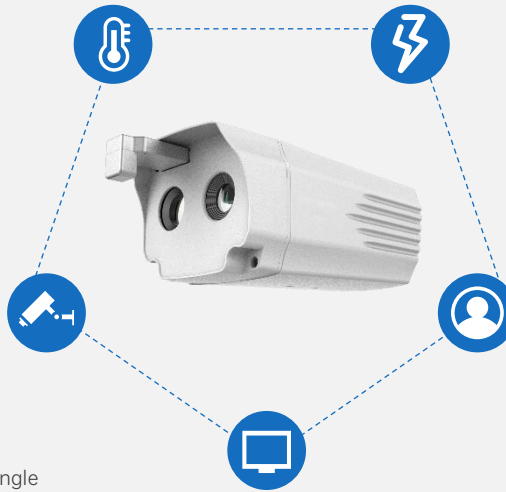
Features ▶

Safe, reliable and accurate screening

Contactless infrared thermal imaging temperature screening, support custom temperature measurement area, can effectively avoid environmental interference, real-time display of temperature data, real-time alarm of over-temperature personnel; integrated blackbody innovative patented technology for simple installation and high temperature measurement accuracy and stability

Easy installation and flexible deployment

Standard integrated blackbody, single network cable interface, high integration of configuration, easier to install; support vertical installation / hoisting / wall mounted, rapid deployment in 15 minutes, more convenient for installation and maintenance



Multiple configuration methods for selection

It adopts B/S architecture and provides two software solutions adapted to Windows and Android systems, which can be connected to monitors of any size, smart TVs and ordinary PC computers, cost-effective solution

AI intelligent algorithm for quickly measuring

High-performance AI algorithm and intelligent face recognition. When people pass in an orderly manner, temperature detection and personnel identification information verification are performed at the same time, meeting management functions such as fast temperature monitoring, over-temperature identification, counting, etc.

A new generation of epidemic control system with more functions

It integrates various of functions such as high and low temperature and over-temperature alarms, alarm sound prompts, mask recognition, automatic capture of alarm face image, face database management, and shielding area settings

Specifications ▶

Model	QT400	QT410	QT200	QT210
IR Resolution	400*300		256*192	
Visible Camera	2 million pixels			
Temp. Range	28°C~45°C			
Accuracy	±0.3°C			
Measuring Distance	0.5m-5m			
Realtime Preview	Real-time preview of visible light image and thermal image channels			
Temperature Measurement	The face recognition area automatically displays the temperature cursor, and supports full-screen point temperature measurement			
Alarm	automatically deliver the image and sound alarm, and capture a face picture while detecting the elevated temperature			
Face Recognition	Intelligent face recognition, mask wearing recognition, face comparison library supports up to 50,000 people			
Software System	Andoid	Windows	Andoid	Windows
System Settings	Support Chinese and English fast witching, °C, °F fast switching			
Network Protocol	IPv4/IPv6,HTTP,HTTPS,FTP,RTSP,TCP,UDP,DHCP			
Size	240mm×112mm×90mm			
Weight	1020g			
Applicable Environment	Indoor/No wind			

*Note: The temperature measurement accuracy is the typical value under the specified mode and application conditions. The final interpretation right belongs to our company.

Application ▶

QT Series is applicable for public places such as transportation hubs, shopping malls, hospitals, scenic spots, etc. to realize safe and efficient temperature monitoring. The intelligent face recognition function is especially suitable for places with fixed population such as enterprises and institutions, communities, schools, etc.

Deployment suggestion: Set up a one-way channel to allow people to pass through in an orderly manner. The passage width is 1.5-2 meters, and the passage efficiency is about 120 people/minute.



Government



Hospital



Scenic spot



Bank



Factory



Office Building



School



Shopping Mall



Residential Area

Configuration List ▶

Model		QT400/QT200	QT410/QT210
Thermal Camera Kit		Thermal camera, Algorithm Box, 32gTF Card, Mouse	Thermal camera
		Power adapter, network cable, user manual, ground sticker for temperature measurement area, packing list, etc.	
Standard Software		Android	Windows
Display Options	21" Monitor	✓	N/A
	55" TV	✓	N/A
	Desktop PC	N/A	✓
	Laptop	N/A	✓
Bracket Options	Wall-mounting bracket	✓	✓
	Hanging bracket	✓	✓
	Tripod	✓	✓
	Integrated mobile stand	✓	N/A



QT200/QT400
(Android)



QT210/QT410
(Windows)

Recommended configuration ▶



Solution 1

Small and compact, easy installation, flexible deployment

Applicable Model	QT400/QT200
Standard	Thermal Camera +Algorithm Box (with Android APP) +TF Card +Mouse
Display Options	21 Inch display (HDMI interface, including audio)
Bracket Options	Wall mounting bracket/hanging bracket/Tripod

Solution 2

Integrated design, large screen display, better experience

Applicable Model	QT400/QT200
Standard	Thermal Camera +Algorithm Box (with Android APP) +TF Card +Mouse
Display Options	55 inch LCD TV
Bracket Options	Integrated mobile stand



Solution 3

Controllable cost, more economical, and old computers can be reused



Applicable Model	QT410/QT210
Standard	Thermal Camera +PC-Client software
Display Options	PC or laptop (no configuration requirements) + bracket
Bracket Options	Wall mounting bracket/hanging bracket/Tripod

Архангельск (8182)63-90-72
Астана (7172)727-132
Астрахань (8512)99-46-04
Барнаул (3852)73-04-60
Белгород (4722)40-23-64
Брянск (4832)59-03-52
Владивосток (423)249-28-31
Волгоград (844)278-03-48
Вологда (8172)26-41-59
Воронеж (473)204-51-73
Екатеринбург (343)384-55-89
Иваново (4932)77-34-06

Ижевск (3412)26-03-58
Иркутск (395)279-98-46
Казань (843)206-01-48
Калининград (4012)72-03-81
Калуга (4842)92-23-67
Кемерово (3842)65-04-62
Киров (8332)68-02-04
Краснодар (861)203-40-90
Красноярск (391)204-63-61
Курск (4712)77-13-04
Липецк (4742)52-20-81
Киргизия (996)312-96-26-47

Магнитогорск (3519)55-03-13
Москва (495)268-04-70
Мурманск (8152)59-64-93
Набережные Челны (8552)20-53-41
Нижний Новгород (831)429-08-12
Новокузнецк (3843)20-46-81
Новосибирск (383)227-86-73
Омск (3812)21-46-40
Орел (4862)44-53-42
Оренбург (3532)37-68-04
Пенза (8412)22-31-16
Россия (495)268-04-70

Пермь (342)205-81-47
Ростов-на-Дону (863)308-18-15
Рязань (4912)46-61-64
Самара (846)206-03-16
Санкт-Петербург (812)309-46-40
Саратов (845)249-38-78
Севастополь (8692)22-31-93
Симферополь (3652)67-13-56
Смоленск (4812)29-41-54
Сочи (862)225-72-31
Ставрополь (8652)20-65-13
Казахстан (772)734-952-31

Сургут (3462)77-98-35
Тверь (4822)63-31-35
Томск (3822)98-41-53
Тула (4872)74-02-29
Тюмень (3452)66-21-18
Ульяновск (8422)24-23-59
Уфа (347)229-48-12
Хабаровск (4212)92-98-04
Челябинск (351)202-03-61
Череповец (8202)49-02-64
Ярославль (4852)69-52-93